

vtech®

Parent's Guide

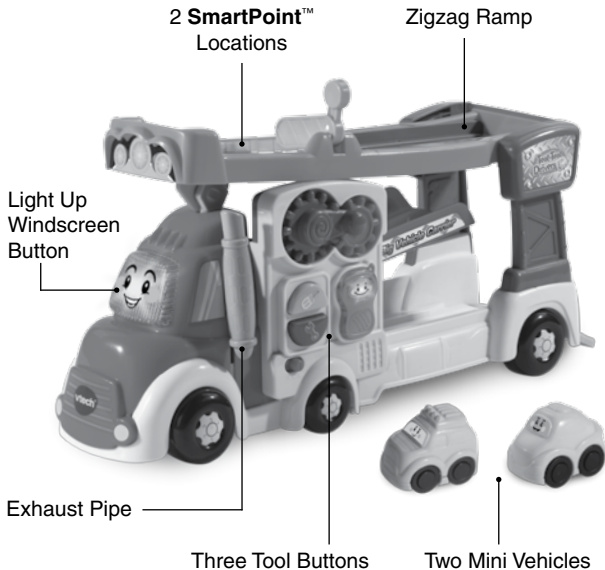


Big Vehicle Carrier



INTRODUCTION

Thank you for purchasing the **Toot-Toot Drivers® Big Vehicle Carrier**. Your little one will love loading cars on and off the big carrier and playing with the zigzag stunt ramp all while hearing a variety of playful sounds and melodies and learning about numbers, tools and phrases.



INCLUDED IN THIS PACKAGE

- One **Big Vehicle Carrier**
- One Parent's Guide
- Two Mini Vehicles

WARNING:

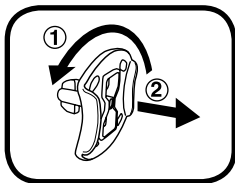
All packing materials such as tape, plastic sheets, packaging locks, removable tags, cable ties and packaging screws are not part of this toy and should be discarded for your child's safety.

NOTE: Please keep this parent's guide as it contains important information.

Please cut and discard the strings that attach the vehicles to the unit before playing.

Unlock the packaging locks:

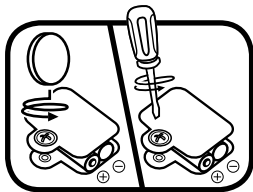
- ① Rotate the packaging locks 90 degrees anticlockwise.
- ② Pull out the packaging locks.



GETTING STARTED

BATTERY REMOVAL AND INSTALLATION

1. Make sure the unit is turned **OFF**.
2. Remove old batteries by pulling up on one end of each battery. Use a coin or a screwdriver to loosen the screw.
3. If used or spent batteries are present, remove these batteries from the unit by pulling up on one end of each battery.
4. Install 2 new AAA (AM-4/LR03) batteries following the diagram inside the battery box. (The use of new alkaline batteries is recommended for maximum performance.)
5. Replace the battery cover and tighten the screw to secure.



BATTERY NOTICE

- Use new alkaline batteries or fully charged NI-MH (Nickel Metal-hydride) rechargeable batteries for best performance.
- Use only batteries of the same or equivalent type as recommended.
- Do not mix different types of batteries: alkaline, standard (carbon-zinc) or rechargeable, or new and used batteries.
- Do not use damaged batteries.
- Insert batteries with the correct polarity.
- Do not short-circuit the battery terminals.
- Remove exhausted batteries from the toy.
- Remove batteries during long periods of non-use.
- Do not dispose of batteries in fire.
- Do not charge non-rechargeable batteries.
- Remove rechargeable batteries from the toy before charging (if removable).
- Rechargeable batteries are only to be charged under adult supervision.

Disposal of batteries and product



The crossed-out wheellie bin symbols on products and batteries, or on their respective packaging, indicates they must not be disposed of in domestic waste as they contain substances that can be damaging to the environment and human health.



The chemical symbols Hg, Cd or Pb, where marked, indicate that the battery contains more than the specified value of mercury (Hg), cadmium (Cd) or lead (Pb) set out in Battery Directive (2006/66/EC).

The solid bar indicates that the product was placed on the market after 13th August, 2005.

Help protect the environment by disposing of your product or batteries responsibly.

For more information, please visit:

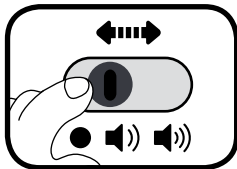
www.recycle-more.co.uk

www.recyclenow.com

PRODUCT FEATURES

1. On/Off/Volume Control Switch

To turn the unit **On**, slide the **On/Off/Volume Control Switch** to the Low Volume (◀) or High Volume (▶) position. You will hear a song, a fun phrase and a playful sound. To turn the unit **Off**, slide the **On/Off/Volume Control Switch** to the **Off** ● position.



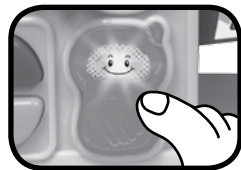
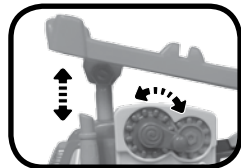
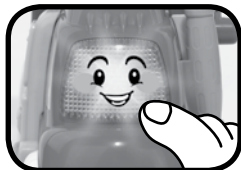
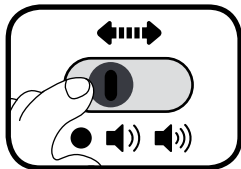
2. Automatic Shut Off

To preserve battery life, the **Toot-Toot Drivers® Big Vehicle Carrier** will automatically power down after approximately 90 seconds without input. The unit can be turned on again by pressing any button.

NOTE: If the unit powers down while playing, we suggest changing the batteries.

ACTIVITIES

1. Slide the **On/Off/Volume Control Switch** to turn the unit **On**. You will hear sounds, a song and a phrase. The light will flash with the sounds.
2. Press the **Light Up** button to hear sounds, songs and phrases. The light will flash with the sounds.
3. Turn the **Gears** to raise and lower the ramp and trigger fun sounds and phrases. The light will flash with the sounds.
4. Push the **Exhaust Pipe** up and down to hear fun engine sounds. The light will flash with the sounds.
5. Press the **Walkie Talkie** button to hear interactive phrases and sound effects. The light will flash with the sounds.



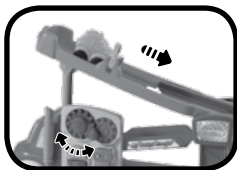
6. Press the **Screwdriver** and **Spanner** buttons to hear fun sounds and learn the name of each tool. The light will flash with the sounds.



7. Push the **Big Vehicle Carrier** to hear sounds. If a melody is already playing, push the carrier to add fun sounds on top of the melody. The light will flash with the sounds.



8. Turn the **Gears** to raise the **Ramp**. Then place **Mini Vehicles** on top of the **Ramp**, lift the gate and launch the vehicle down the zigzag track.



9. Place any **SmartPoint™** vehicle (sold separately) on either of the **SmartPoint™** locations to trigger fun sounds, phrases and songs.



SONG LYRICS

Song 1

Toot-Toot Drivers!

Toot-Toot Drivers!

I'm a Toot-Toot Drivers car carrier,
transporting all kinds the cars.(Toot-Toot)
I'm gonna find out what's around the bend.

Let's Go! Go! and see (Toot-Toot)

Song 1 (short version)

Toot-Toot Drivers!

Toot-Toot Drivers!

Song 2

Here I go up and down.

Here I go fast and safe.

Here I go load and unload

All on a joyful day.

Song 3

I'm a super carrier, strong and busy.

Working through the sun and rain, I'll never be late!

MELODY LIST

1. I've Been Working on the Railroad
2. London Bridge
3. On Top of Old Smokey
4. When Johnny Comes Marching Home Again
5. Green Grass Grew All Around
6. Big Rock Candy Mountain

CARE & MAINTENANCE

1. Keep the unit clean by wiping it with a slightly damp cloth.
2. Keep the unit out of direct sunlight and away from any direct heat source.
3. Remove the batteries when the unit will not be in use for an extended period of time.
4. Do not drop the unit on hard surfaces and do not expose the unit to moisture or water.

TROUBLESHOOTING

If for some reason the unit stops working or malfunctions, please follow these steps:

1. Please turn the unit **OFF**.
2. Interrupt the power supply by removing the batteries.
3. Let the unit sit for a few minutes, then replace the batteries.
4. Turn the unit **ON**. The unit should now be ready to play again.
5. If the product still does not work, replace with an entire set of new batteries.

If the problem persists, please call our Consumer Services Department and a service representative will be happy to help you.

CONSUMER SERVICES

Creating and developing **VTech®** products is accompanied by a responsibility that we at **VTech®** take very seriously. We make every effort to ensure the accuracy of the information, which forms the value of our products. However, errors sometimes can occur. It is important for you to know that we stand behind our products and encourage you to call our Consumer Services Department with any problems and/or suggestions that you might have. A service representative will be happy to help you.

UK Customers:

Phone: 0330 678 0149 (from UK) or +44 330 678 0149 (outside UK)

Website: www.vtech.co.uk/support

Australian Customers:

Phone: 1800 862 155

Website: support.vtech.com.au

NZ Customers:

Phone: 0800 400 785

Website: support.vtech.com.au

Product Warranty /Consumer Guarantees

UK Customers:

Read our complete warranty policy online at vtech.co.uk/warranty.

Australian Customers:

VTECH ELECTRONICS (AUSTRALIA) PTY LIMITED – CONSUMER GUARANTEES

Under the Australian Consumer Law, a number of consumer guarantees apply to goods and services supplied by VTech Electronics (Australia) Pty Limited. Please refer to vtech.com.au/consumerguarantees for further information.



**CLASS 1
LED PRODUCT**

**Visit our website for more
information about our products,
downloads, resources and more.**

www.vtech.co.uk
www.vtech.com.au

